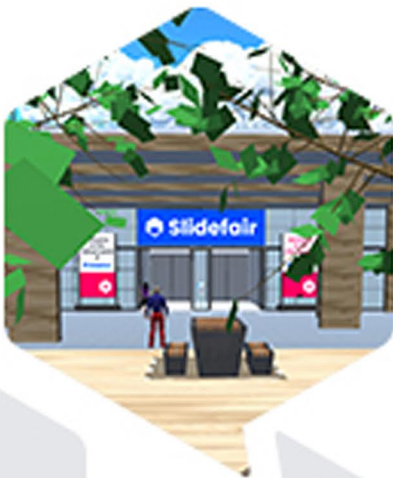


Slidefair

Booth Specifications

Premium Booths





To be provided by exhibitors

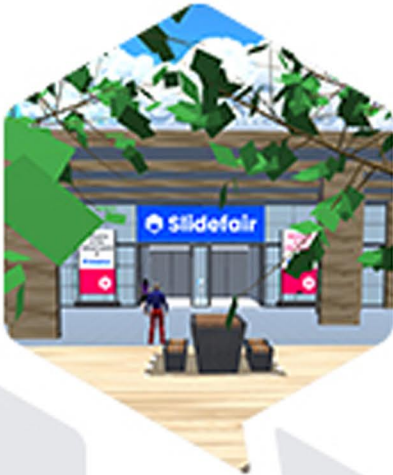
Premium Booths:

Artwork for booth walls as indicated for each booth.

A maximum of 9 PDF's to be displayed.
(optional)

A maximum of 6 weblinks to be displayed on the desktop screens (optional)

1 video mp4 format to be displayed on the video screen (optional).



Example - EB101

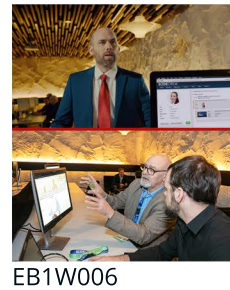
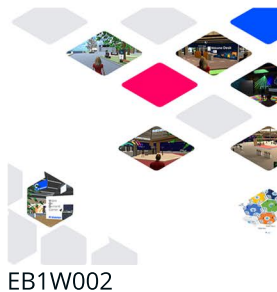
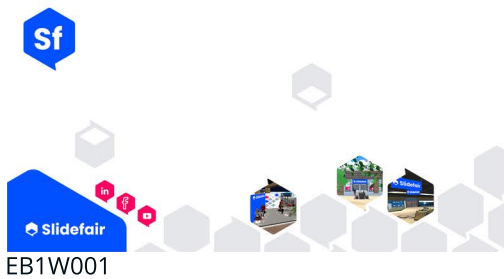
Graphic Specifications

The images used in this document are only for the purpose of displaying Image sizes. For this reason some booth elements have been removed or changed.



Graphics Number	Code	Size in pixels
-----------------	------	----------------

Image 1	EB1W001	1868 x 720
Image 2	EB1W002	880 x 720
Image 3	EB1W003	1358 x 720
Image 4	EB1W004	1358 x 720
Image 5	EB1W005	772 x 720
Image 6	EB1W006	772 x 720
Image 7	EB1W007	2470 x 180
Image 8	EB1W008	1452 x 180



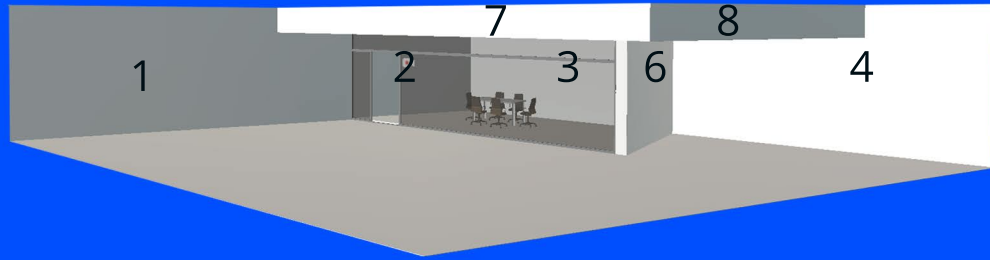
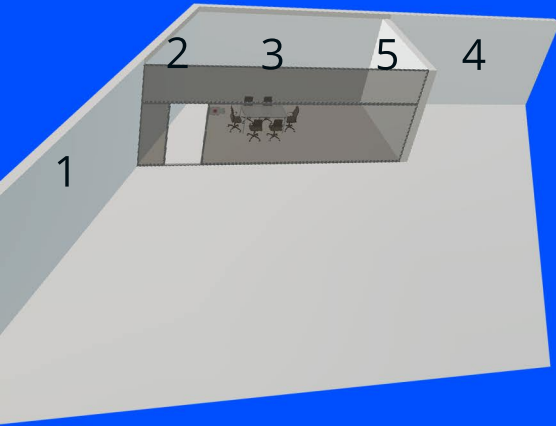
Slidecrew BV
Kwaklaan 11
NL-2291 AT Wateringen
The Netherlands

Phone: +31 (0) 174-730 969
Email: info@slidefair.com
Website: www.slidefair.com

Premium Booth 1 – BP201

Graphic Specifications

The images used in this document are only for the purpose of displaying Image sizes. For this reason some booth elements have been removed or changed.



Graphics Number

Code

Size in pixels

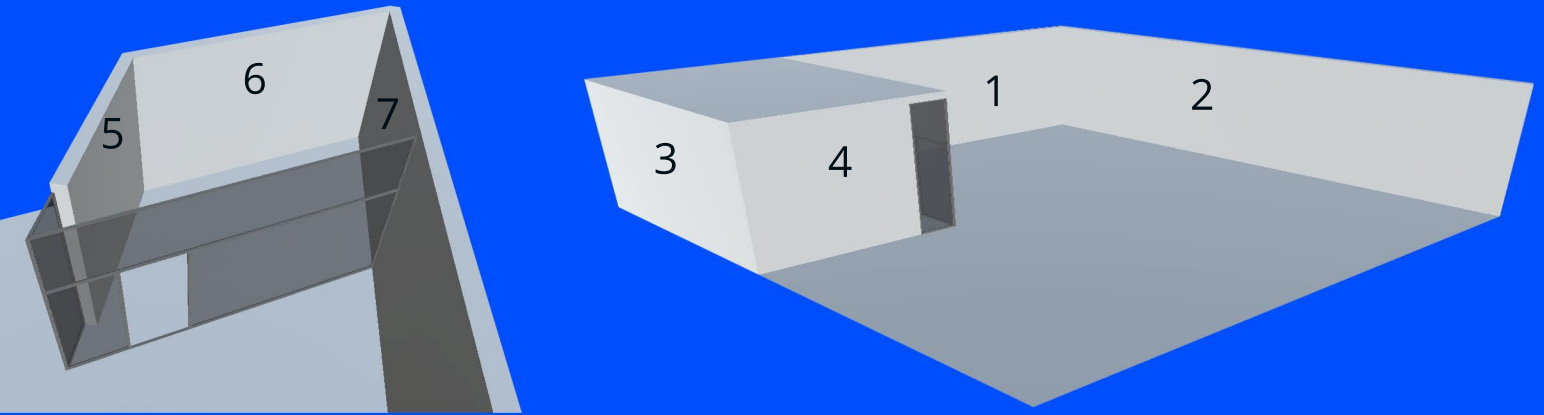
Image 1	BP1W01	1392 x 720
Image 2	BP1W02	776 x 720
Image 3	BP1W03	878 x 720
Image 4	BP1W04	672 x 720
Image 5	BP1W05	640 x 720
Image 6	BP1W06	1278 x 720
Image 7	BP1W07	1470 x 720
Image 8	BP1W08	1012 x 720



Premium Booth 2 – BP202

Graphic Specifications

The images used in this document are only for the purpose of displaying Image sizes. For this reason some booth elements have been removed or changed.



Graphics Number

Code

Size in pixels

Image 1	BP2W01	1278 x 720
Image 2	BP2W02	2130 x 720
Image 3	BP2W03	1058 x 720
Image 4	BP2W04	660 x 720
Image 5	BP2W05	686 x 720
Image 6	BP2W06	1100 x 720
Image 7	BP2W07	858 x 720



Slidecrew BV
Kwaklaan 11
NL-2291 AT Wateringen
The Netherlands

Phone: +31 (0) 174-730 969
Email: info@slidefair.com
Website: www.slidefair.com



**For more Information,
please contact:**

**Info@slidefair.com
+31 (0) 174 730 969**

or visit

www.slidefair.com

